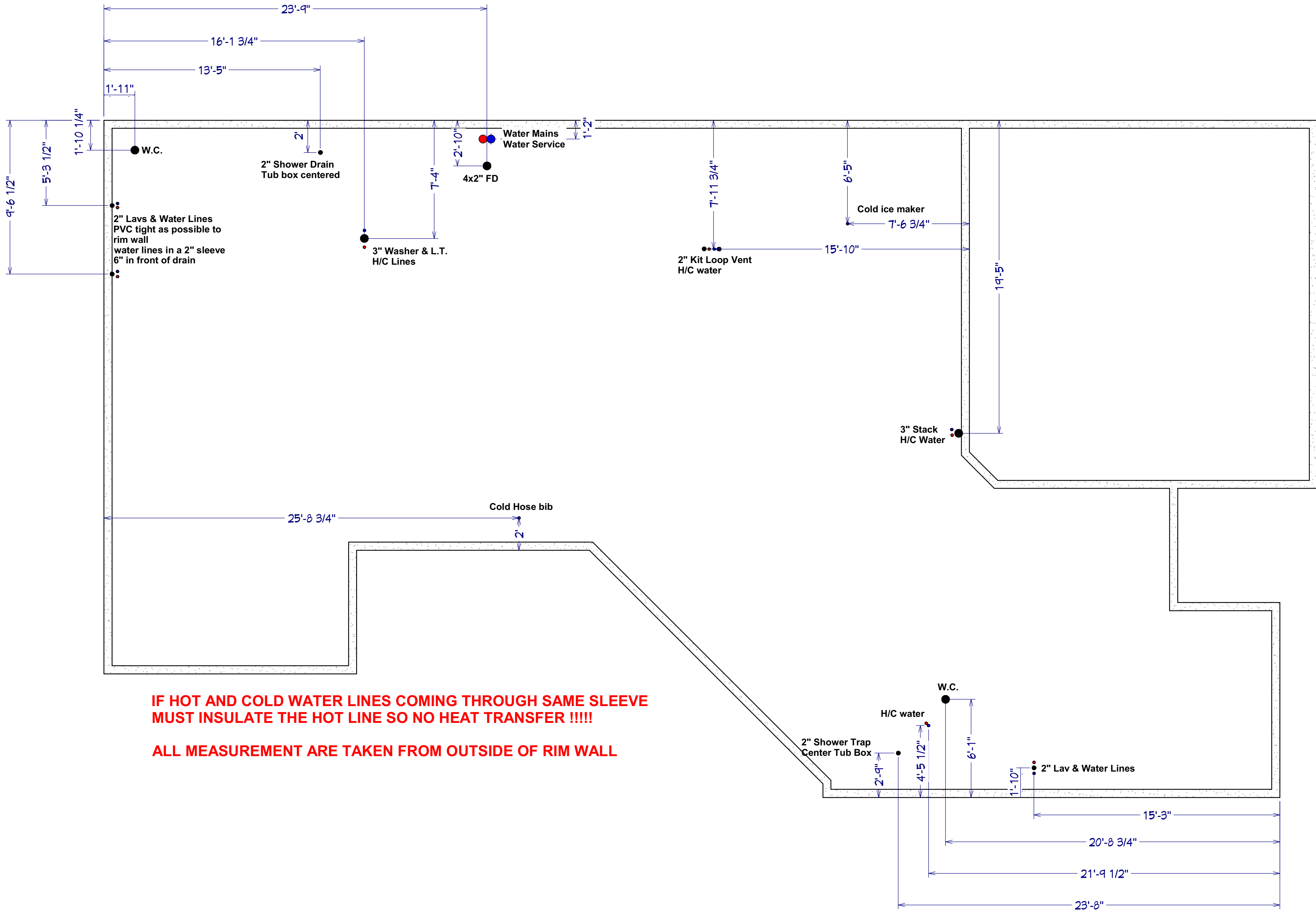
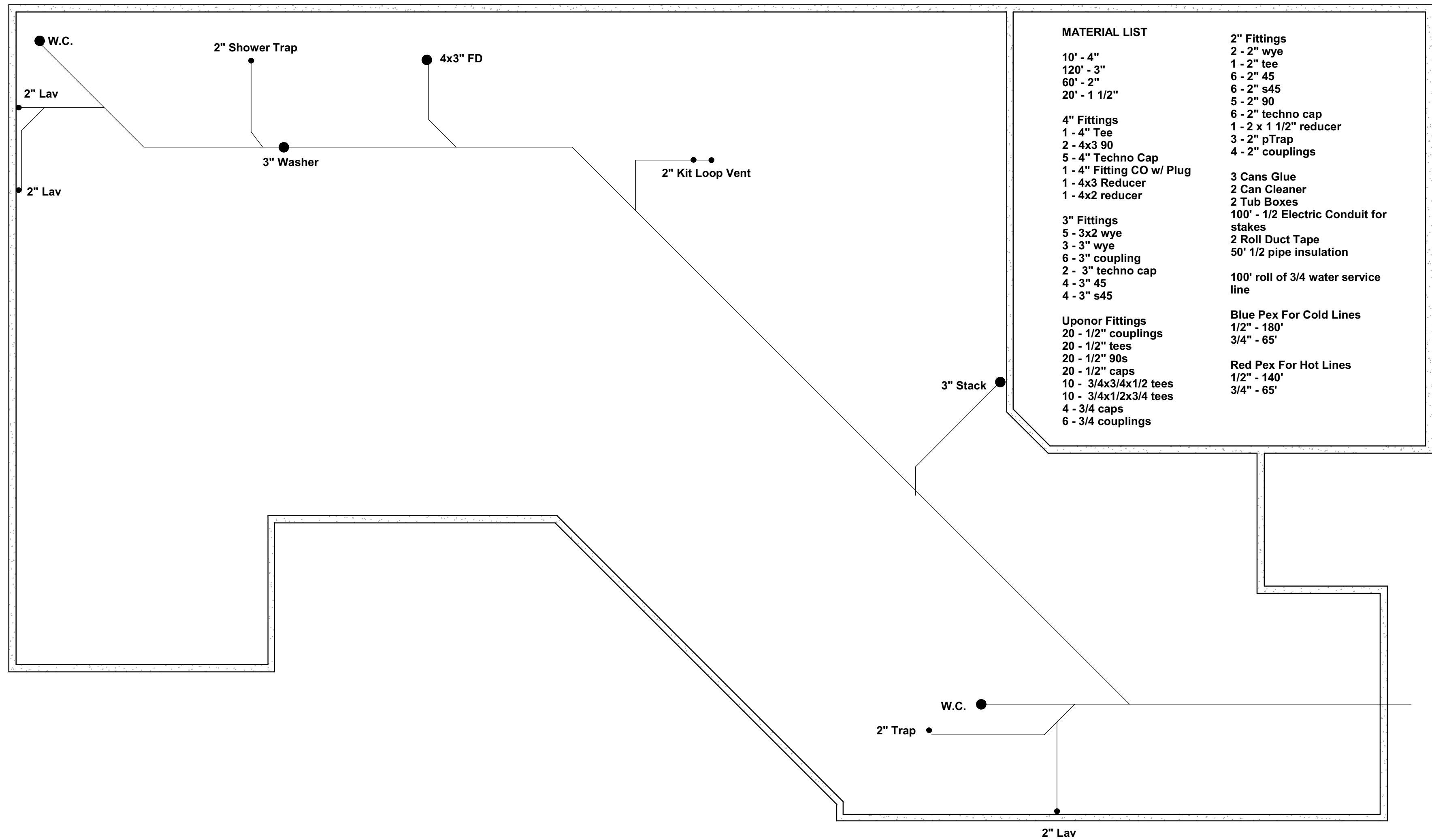


**2 - Extension to rear - upgraded master bath  
BATH 2 - Optional Walk-In Shower**





**MATERIAL LIST**

10' - 4"  
120' - 3"  
60' - 2"  
20' - 1 1/2"

**4" Fittings**  
1 - 4" Tee  
2 - 4x3 90  
5 - 4" Techno Cap  
1 - 4" Fitting CO w/ Plug  
1 - 4x3 Reducer  
1 - 4x2 reducer

**3" Fittings**  
5 - 3x2 wye  
3 - 3" wye  
6 - 3" coupling  
2 - 3" techno cap  
4 - 3" 45  
4 - 3" s45

**Uponor Fittings**  
20 - 1/2" couplings  
20 - 1/2" tees  
20 - 1/2" 90s  
20 - 1/2" caps  
10 - 3/4x3/4x1/2 tees  
10 - 3/4x1/2x3/4 tees  
4 - 3/4 caps  
6 - 3/4 couplings

**2" Fittings**  
2 - 2" wye  
1 - 2" tee  
6 - 2" 45  
6 - 2" s45  
5 - 2" 90  
6 - 2" techno cap  
1 - 2 x 1 1/2" reducer  
3 - 2" pTrap  
4 - 2" couplings

3 Cans Glue  
2 Can Cleaner  
2 Tub Boxes  
100' - 1/2 Electric Conduit for stakes  
2 Roll Duct Tape  
50' 1/2 pipe insulation

100' roll of 3/4 water service line

**Blue Pex For Cold Lines**  
1/2" - 180'  
3/4" - 65'

**Red Pex For Hot Lines**  
1/2" - 140'  
3/4" - 65'